

POWER-PACKER®

Progress in Motion



HYDRAULIC POSITION AND MOTION CONTROL SOLUTIONS





Contents

The Power-Packer Difference	3
Hydraulic Stabilization Legs	4
Hydraulic Landing Gear Systems	10
Hydraulic Cab Tilt Systems	12
Hydraulic Cylinders	14
Cab Suspension.....	15
Product Specifications.....	16
Our Global Locations	32

Power-Packer offers position and motion control systems for custom applications. What can we design for you?

POWER-PACKER®





Power-Packer offers hydraulic position and motion control solutions for the toughest, most critical demands in markets including on-highway vehicles; construction; mining; oil and gas; military; and fire and rescue.

Discover the Power-Packer Difference

Power-Packer system components are designed for the most critical needs out there. Yours. For more than 35 years, we've engineered a robust and innovative line of hydraulic position and motion control products and systems that have become the gold standard in excellence for tilting, latching, leveling and stabilizing systems in both on- and off-highway markets.

Every day, we help our customers — and their customers — work smarter, safer and more efficiently with flexible, customized solutions that optimize operational stability and productivity. From lifting a heavy load or supporting a packed trailer, to locking a drill mast in position or stabilizing a utility truck, Power-Packer systems consistently stand up to the harshest work environments and most rigorous demands.

Along with hard-working, precision components built to ISO9001 standards, Power-Packer delivers personalized, timely service, no matter how complex or unique your need may be. Our goal is to always give you the highest-quality, longest-lasting, safest products on the market today.

When it has to perform — every time — choose Power-Packer.
Call 800.745.4142 to learn more. www.powerpackerus.com





Hydraulic Stabilization Legs

Custom-built for your application. Robust. Seamless. Safe. Long-lasting. Contamination-free. And easy-to-install.

Power-Packer's comprehensive line of hydraulic stabilization legs are engineered for maximum power and performance.

Whatever your application, from heavy-duty on- or off-road equipment to lighter-duty work trucks, Power-Packer stabilization systems offer superior performance to ensure a safer, more efficient work environment. Choose from a wide range of features and capabilities, along with bore sizes, load ratings, and stroke lengths to best meet your needs.

Call 800.745.4142 to learn more. www.powerpackerus.com

POWER-PACKER®

HEAVY-DUTY HYDRAULIC STABILIZATION LEGS

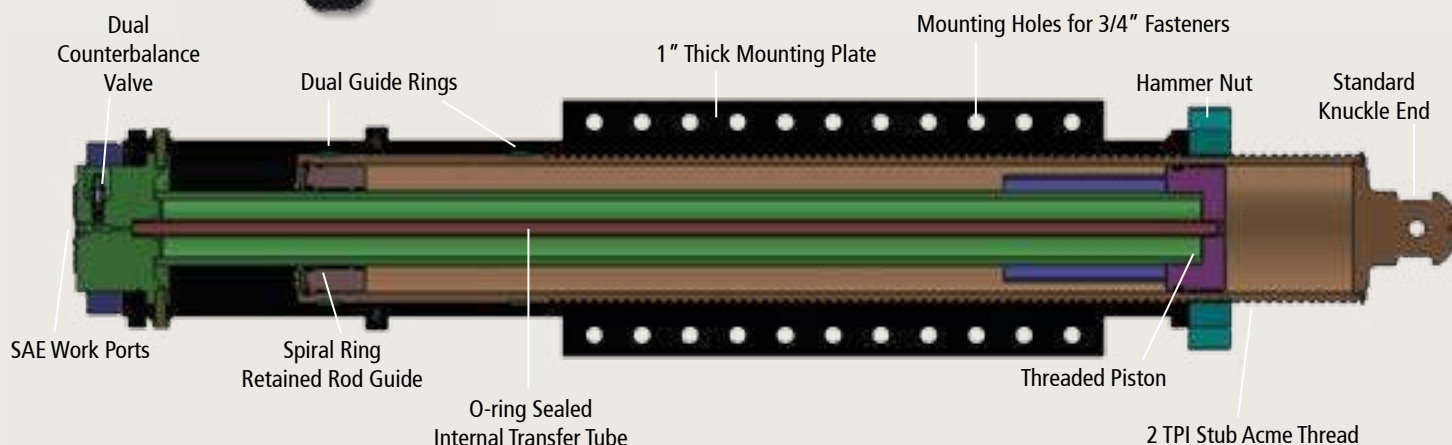
Power-Packer's heavy-duty, hydraulic stabilizing legs provide everything you demand in this key component. From drill rigs and rough terrain cranes to mobile crushing units and specialty trailers, our hydraulic stabilizing legs safely support and level a wide range of tough equipment applications. Power-Packer legs arrive completely assembled and tested with a bolt-on, outer tube mount conveniently integrated into the design. Plus, our mounting bracket can also be customized to meet your exact specifications.



- Integrated load holding/relieving valves to eliminate potential for catastrophic failure
- Dual guide rings inside an outer mount tube to offer side load advantage and save on wear
- Optional mechanical locking for maximum safety and flexibility
- Hydraulic lift capacities from 59,000 lbs. up to 115,000 lbs.
- Mechanical load holding up to 245,000 lbs.
- 10 to 20 percent side-load capacity depending on stroke
- Bore size from 5" to 7"
- Stroke lengths from 12" to 60"
- SAE work ports for reduced leak potential
- Lock nut threads designed to withstand external contaminants
- Footpads available in articulated and removable styles



See page 17 for all heavy-duty hydraulic stabilizing leg specifications.



STANDARD HYDRAULIC STABILIZATION LEGS



Power-Packer offers a complete line of standard hydraulic stabilization legs ranging in bore size from 3" to 6" to meet any on- or off-highway demand. Innovative design features include:

- Load ratings from 16,000 to 70,000 lbs. provide secure lifting, lowering, and leveling of even the largest equipment
- Power-Packer's unique stiff leg option works as a secondary locking device for extended-use equipment
- Rod up, tube-in-tube design isolates the rod and seals from external damage for longest life in harsh environments
- Unique Power-Packer thru-rod design, which ports the cylinder internally to eliminate an external transfer tube, for maximum safety and durability
- Integral load-holding valves to ensure stability in all situations, while the leg is under load
- Optional integral counterbalance valves for overload protection when lifting an unbalanced load with multiple legs
- All-in-one design for easiest, most efficient mounting

Talk to a Power-Packer engineer to create a custom solution for your on- or off-highway application.

See page 18 for all standard hydraulic stabilization leg specifications.

POWER-PACKER®

HYDRAULIC OUTRIGGER SYSTEMS FOR WORK TRUCKS

Specifically designed for your work truck application, our customizable system securely stabilizes the truck and provides safer working conditions for operators, while protecting your customer's assets. Options for this hard-working system include a 12V electric/hydraulic pump and touchpad control, hydraulic stabilizing legs with dual pilot-operated check valves, and a long power-out cylinder for consistent, fast outrigger extension and retraction. Power-Packer can also supply the wire harnesses, hoses and accessories needed — making installation simple and fast. Choose Power-Packer's Hydraulic Outrigger Systems for your work trucks and get ready to raise your performance, safety and cost-savings.

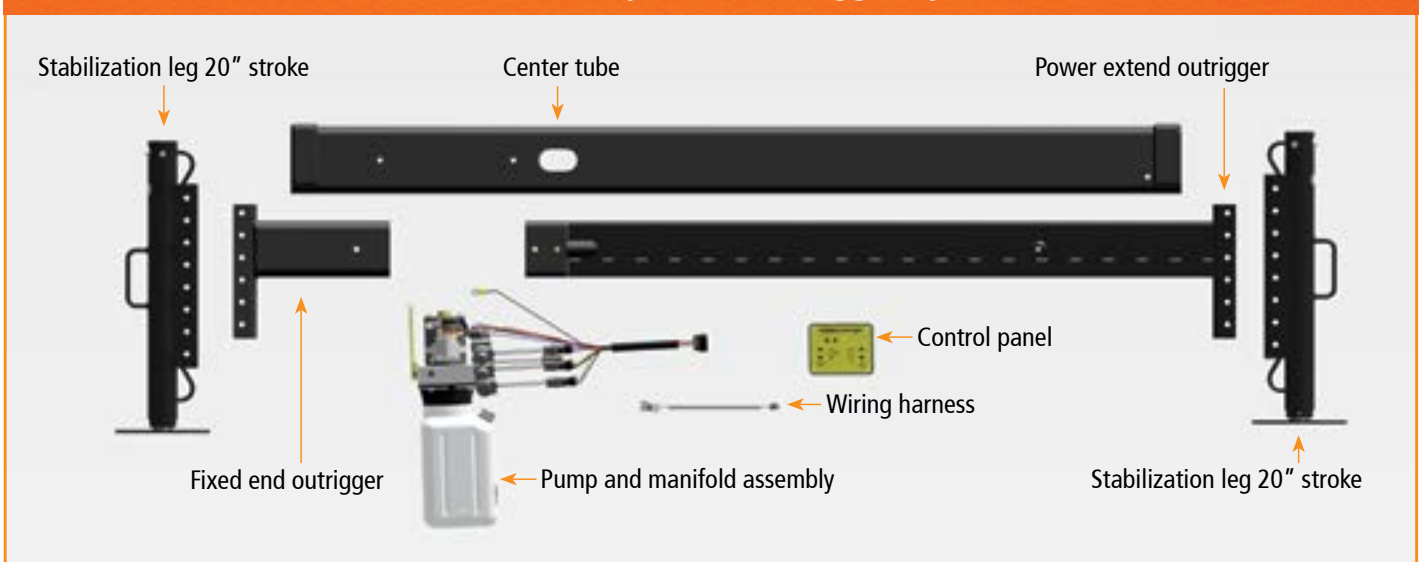


- Up to 14,000 lbs. boom stabilization capacity
- Protected 36" to 42" outrigger extension
- 20" leg stroke
- Optimized 2-1/4" or 3" bore sizes
- Universal mount capability under and over frame for maximum flexibility
- Internal dual pilot-operated check valves to better stabilize truck and enhance safety
- Low friction slideout for outrigger
- SAE work ports for reduced leak potential
- Choose round or square stabilizing legs to fit your application
- Option to run off a PTO or self-contained power unit

See page 22 for all hydraulic outrigger systems for work trucks product specifications.



Power-Packer Hydraulic Outrigger System



HYDRAULIC STABILIZATION SYSTEM COMPONENTS

Power-Packer offers a variety of high-performing hydraulic stabilization components to give you the optimal system for almost any on- or off-road vehicle or equipment. All are designed to withstand severe operating elements and offer years of safe, trouble-free operation. Choose from electric/hydraulic or gas/diesel powered control boxes, hydraulic valve assemblies, and versatile mounting plates and accessories.

See page 24 for all hydraulic stabilizing system component product specifications.



POWER-PACKER

Electric/Hydraulic System Control Boxes

Often used with off-highway hydraulic stabilization systems, Power-Packer's electric/hydraulic control boxes feature a self-contained power source and are available in a variety of configurations to meet your unique application. Our patented flow restrictor controls retraction. Other features include an oil reservoir with a level gauge for optimal productivity. Power-Packer control boxes are available with one to six valves and a 6.5, 11 or 13 gallon reservoir.



Hydraulic Valve Assemblies

Let Power-Packer's precision engineering team determine the best valves to use for your application. Our valve assemblies utilize a motor spool configuration. This ensures that the load is held by the load holding valves at the leg, and not at the control valve, with the additional benefit that the hoses are only pressurized when the leg is in motion. Power-Packer valve assemblies also include integral flow controls to provide chatter-free descent control.



Gasoline Engine Driven Hydraulic Power Unit

Power-Packer's self-contained gas-powered units provide fast, no-hassle set up of your equipment. Each unit includes a battery, charging system, and a manual override pull start. The gas electronic ignition engine has a 12 volt DC starter and meets EPA emission standards. These units have an 11 gallon reservoir for long-term performance.

Mounting Plates

Power-Packer offers a variety of mounting plates and accessories constructed of strong, heavy-gauge steel and featuring versatile mounting holes. Our engineers can help you choose the best components for your unique application.





Hydraulic Landing Gear Systems

Power-Packer air over hydraulic powered landing gear systems can easily level the trailer with the dock for quick and simple unloading or loading. Customize a landing gear system for your unique need and your employees or customers can load, unload and move trailers with ease and efficiency, improving safety, productivity and job satisfaction.

To ensure optimal flexibility and performance, we offer a diverse range of high quality components to create the perfect front or rear mounted landing gear system for your application. Front systems mount to existing trailer wing plates, while rear systems typically mount between rear dual tires on high cube, drop frame trailers. Whatever your need, Power-Packer engineers can help make the job easier and safer for everyone.

Benefits of Front and Rear Mount Landing Gear Systems

Front Mount — Provides fast, efficient coupling, especially under heavy loads. The landing gear effortlessly levels the trailer on uneven ground, reducing potential operator injury and damage to trailer.

Rear Mount — Easily lifts trailers (up to 70,000 lbs.) to match dock height, ensuring a level surface between the dock and the trailer. This results in faster material transfer time and an increased opportunity for backhaul revenue.

Leg Assemblies

Power-Packer offers a wide range of leg sizes to fit just about any variety of truck, trailer, and specialty vehicle chassis platform. Features include:

- Booster option leg assemblies in 3.5" or 4" bore size
- Stroke range from 15" to 24.5"
- Non-exposed rods that will never rust or corrode, even in the harshest environments
- No external transfer tube to bend or break reducing uptime and costly repairs
- Strong, efficient leg design for maximum durability and reliability
- Integrated shoe provides stability and minimizes penetration
- Pilot-operated lock valve works even if hydraulic system fails
- Easy-to-repair lock valves without removing leg, for maximum efficiency of repair



Control Box

Our air-powered control box converts emergency brake air supply (100 psi) into reliable lifting power. Choose from a standard control box with 50,000 lb. capacity or a heavy-duty system with a 70,000 lb. capacity and an auto booster option.

Auto Booster

The auto booster option for heavy-duty control boxes automatically extends legs at the push of a button for fastest, easiest operation.

Installation Kit

Power-Packer installation kits include all required hoses, fittings, connectors and hardware.

Split Collar Assemblies

These are required for bracing the leg assembly.

Matching Mounting Plates

When correct mounting points are not available, Power-Packer's mounting plates make installation a snap.

See page 26 for all landing gear system specifications.





Hydraulic Cab Tilt Systems

Power-Packer's complete range of cab tilt systems and hood assist units make it possible for us to design a cab tilting system that is perfectly matched to your application. We can offer you a better fitting system, which results in a better performing system and a safer, more efficient and productive work environment. Power-Packer hydraulic pumps, cylinders and latches combine to create some of the most powerful and durable hydraulic motion control systems available anywhere. Our engineers understand the harsh environments and rigorous demands of on- and off-road equipment, military operations, and fire and rescue settings, and design products that respond as needed in every situation.

Cab Tilt Systems

With our complete range of hydraulic cab tilt components, Power-Packer can work with you to develop a cab tilting system perfectly matched to meet the weight and specs of your cab. When you combine our hydraulic cylinders with any of our hydraulic pumps — whether electric, air or manually powered — you have a better fitting, smarter system that delivers the performance, ergonomic efficiency and safety required to access critical under cab systems.



Specialty Pumps

Choose from a variety of hard-working designs to meet your specific pump needs. Power-Packer offers options such as high quality standard hand pumps or electric pumps that require just a simple push of a button to get down to work.

- Maximum operating pressures from 3,000 to 5,000 psi
- Reservoir capacity of 35 or 65 cubic inches
- Manual override on all pumps

Hydraulic Cylinders

Lightweight and dependable, Power-Packer's line of hydraulic cylinders are single- or double-acting and available in a variety of rod end and base mounting configurations. Optional internal tamper-proof velocity fuses or built-in flow control ensure added safety and performance.

- Maximum operating pressure of 5,000 psi
- Bore sizes from 1.25" to 3.0"
- Steel plunger with hard chrome-plated surface



Hydraulic Latches

Power-Packer's hydraulic latch secures covers and cabs for safe travel and is ideal for new and existing applications. Compact size and strength, along with versatile mounting capability easily meet single or multiple latch needs. Our unique, patented design includes a latch indicator — either a visual pin or an electrical system — with options such as an indicator light or transmission lock that indicates when the latch has engaged mechanically or released hydraulically.

- Maximum vertical pull load of 10,000 lbs.
- Maximum hydraulic pressure of 5,000 psi

See pages 27 and 28 for all pump and latch specifications. See page 29 for all cylinder specifications.

Hydraulic Cylinders

Often used with our cab tilt systems, Power-Packer's versatile line of specialty hydraulic cylinders are also ideal for other applications. Available in single- or double-acting designs, these reliable, lightweight cylinders are available in a variety of rod end and base-mounting configurations. Optional tamper-proof velocity fuses and built-in flow controls features are also offered. Talk with our engineering team today to determine the best cylinders for your unique needs.

Strokes: Per customer specification

Maximum operating pressure: Up to 5,000 psi

Bore diameters: 1.25, 1.5, 2.0, 2.5 in

Plunger: Steel with hard chrome-plated surface (others per request)

See page 28 for all cylinder specifications.





Cab Suspension

Get ready for a smoother ride and improved durability. Power-Packer's innovative CabCushion™ product is a bolt-on air cab suspension system that installs between the cab and chassis of conventional and COE trucks. Our patented CabCushion system isolates your driver and cab from damaging vibration and shock for improved safety, less wear-and-tear on the cab, and greater driver comfort. CabCushion suspensions are available for both driver and passenger sides of your vehicle.

See page 30 for all CabCushion specifications.

POWER-PACKER®

Power-Packer Product Specifications



POWER-PACKER

Heavy Duty Hydraulic Stabilization Legs (Measurements shown in inches | mm)

Part #	Mechanically Locking	Bore	Stroke	Mounting Height (MH)*	Overall Height (OH)	Bracket Width (W)	Bracket Height (H)	Hole Width (HW)
--------	----------------------	------	--------	-----------------------	---------------------	-------------------	--------------------	-----------------

Mechanical Load Rating: **115,000 lbs | 512 k****

Hydraulic Load Rating: **58,000 lbs | 258 kN*****

9010000985	Y	5.0 127	12.0 305	27.4 695	33.25 845	12.0 305	16.5 419	10.0 254
9010000984	Y	5.0 127	18.0 457	36.25 921	41.25 1048	12.0 305	25.5 648	10.0 254
9010000936	Y	5.0 127	24.0 610	36.25 921	50.25 1276	12.0 305	25.5 648	10.0 254
9010000994	Y	5.0 127	30.0 762	36.25 921	60.25 1530	12.0 305	25.5 648	10.0 254
9010000866	Y	5.0 127	36.0 914	36.25 921	59.25 1505	12.0 305	25.5 648	10.0 254
9010000995	N	5.0 127	12.0 305	27.4 695	33.25 845	12.0 305	16.5 419	10.0 254
9010000996	N	5.0 127	18.0 457	36.25 921	41.25 1048	12.0 305	25.5 648	10.0 254
9010000997	N	5.0 127	24.0 610	36.25 921	50.25 1276	12.0 305	25.5 648	10.0 254
9010000998	N	5.0 127	30.0 762	36.25 921	60.25 1530	12.0 305	25.5 648	10.0 254
9010000897	N	5.0 127	36.0 914	36.25 921	59.25 1505	12.0 305	25.5 648	10.0 254

Mechanical Load Rating: **170,000 lbs | 756 kN****

Hydraulic Load Rating: **85,000 lbs | 378 kN*****

9010000776	Y	6.0 152	12.0 305	27.4 695	33.25 845	12.0 305	16.5 419	10.0 254
9010000773	Y	6.0 152	18.0 457	36.25 921	41.25 1048	12.0 305	25.5 648	10.0 254
9010000999	Y	6.0 152	24.0 610	36.25 921	50.25 1276	12.0 305	25.5 648	10.0 254
9010001000	Y	6.0 152	30.0 762	36.25 921	60.25 1530	12.0 305	25.5 648	10.0 254
9010001001	Y	6.0 152	36.0 914	36.25 921	59.25 1505	12.0 305	25.5 648	10.0 254
9010001039	N	6.0 152	12.0 305	27.4 695	33.25 845	12.0 305	16.5 419	10.0 254
9010001040	N	6.0 152	18.0 457	36.25 921	41.25 1048	12.0 305	25.5 648	10.0 254
9010001041	N	6.0 152	24.0 610	36.25 921	50.25 1276	12.0 305	25.5 648	10.0 254
9010001042	N	6.0 152	30.0 762	36.25 921	60.25 1530	12.0 305	25.5 648	10.0 254
9010001043	N	6.0 152	36.0 914	36.25 921	59.25 1505	12.0 305	25.5 648	10.0 254

* Includes 1 in | 25.4 mm thick plate

** Locking only

*** Hydraulic load rating @ 3000 psi | 207 bar

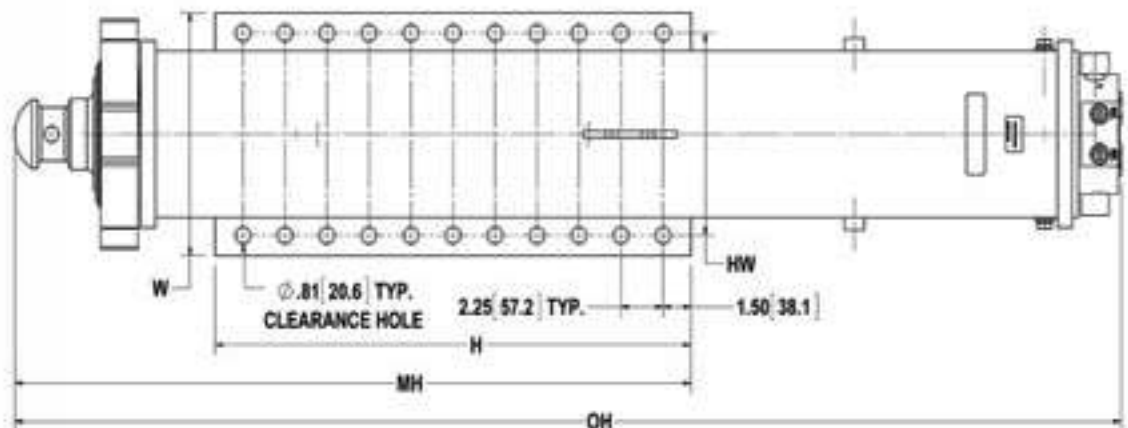


For 7" or larger bores,
please contact
Power-Packer.

HEAVY DUTY SHOES (Measurements shown in inches | mm)

Part #	Shoe Diameter	Description	Degrees of Articulation
3010003212	24.0 610	Aluminum removable	14
1010002937	20.0 508	Steel	20
1010002769	20.0 508	Steel with cleats	20

Shoes work with 5" and 6" bore heavy duty stabilization legs



Power-Packer heavy duty hydraulic stabilization leg 5.0" to 6.0" bore

Standard Hydraulic Stabilization Legs (Measurements shown in inches | mm)

Part #	Bore	Stroke	Mounting Height (MH)*	Shoe	Shoe Type
--------	------	--------	-----------------------	------	-----------

Load Rating: **16,000 lbs | 71.2 kN**

2030-18	3.0 76	18.0 457	17.0 432	10.0 254	Swivel
2010-18	3.0 76	18.0 457	24.0 610	10.0 254	Swivel
2027-18	3.0 76	18.0 457	24.0 610	10.0 254	Swivel
2014-18	3.0 76	18.0 457	26.0 660	10.0 254	Swivel
3510000265	3.0 76	25.0 635	23.5 596	10.0 254	Swivel (outrigger mount)
3510000108	3.0 76	18.0 457	26.6 676	10.0 254	Swivel (outrigger mount)
2012-25	3.0 76	25.0 635	33.5 851	10.0 254	Swivel

Load Rating: **24,000 lbs | 106.8 kN**

300071	3.5 89	15.0 381	25.4 645	10.0 254	Fixed
9010000324	3.5 89	15.0 381	25.6 650	16.0 406	Fixed
300072	3.5 89	16.5 419	26.9 683	10.0 254	Fixed
300554	3.5 89	20.5 521	20.1 510	12.0 305	Swivel
300578	3.5 89	20.5 521	27.5 697	12.0 305	Swivel
300074	3.5 89	20.5 521	30.3 769	12.0 305	Swivel
300075	3.5 89	20.5 521	35.2 894	12.0 305	Swivel
300553	3.5 89	24.5 622	16.2 412	12.0 305	Swivel
300076	3.5 89	24.5 622	34.2 869	12.0 305	Swivel
300666	3.5 89	25.5 648	13.5 342	16.0 406	Swivel
3510000014	3.5 89	35.0 889	13.5 342	16.0 406	Swivel

Load Rating: **24,000 lbs | 106.8 kN - Stiff Legs**

300301	3.5 89	20.5 521	30.3 769	12.0 305	Swivel (right)
300305	3.5 89	24.5 622	34.2 869	12.0 305	Swivel (right)
300672	3.5 89	26.1 662	30.3 769	12.0 305	Swivel (left for inboard mounting)
300671	3.5 89	26.1 662	30.3 769	12.0 305	Swivel (right for inboard mounting)



Standard Hydraulic Stabilization Legs (Measurements shown in inches | mm)

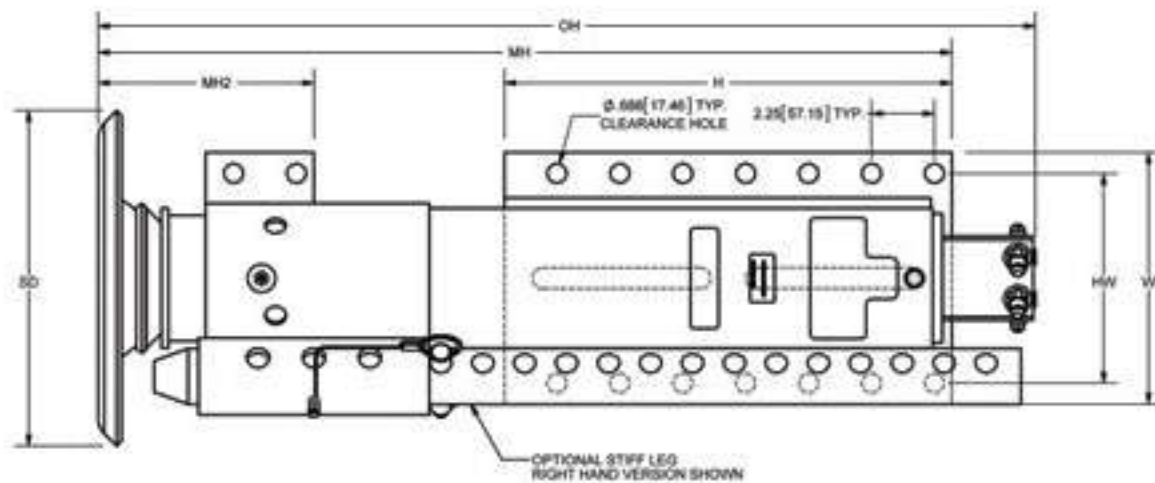
Part #	Bore	Stroke	Mounting Height (MH)*	Shoe	Shoe Type
--------	------	--------	-----------------------	------	-----------

Load Rating: 37,000 lbs | 164.6 kN at 3,000 psi

9010000862	4.0 102	15.0 381	25.4 645	10.0 254	Fixed
9010000863	4.0 102	16.5 419	26.9 684	10.0 254	Fixed
9010000864	4.0 102	16.5 419	28.7 728	12.0 305	Swivel
9010000807	4.0 102	20.5 521	30.5 776	12.0 305	Swivel
9010000820	4.0 102	20.5 521	35.5 901	12.0 305	Swivel
9010000839	4.0 102	24.5 622	25.2 639	12.0 305	Swivel
9010000818	4.0 102	24.5 622	34.5 876	12.0 305	Swivel
9010000816	4.0 102	25.5 648	13.7 349	16.0 406	Swivel
9010000892	4.0 102	30.0 762	30.0 763	12.0 305	Swivel
9010000824	4.0 102	36.0 914	21.2 539	12.0 305	Swivel
9010000874	4.0 102	36.0 914	20.6 523	12.0 305	Swivel
9010000815	4.0 102	36.0 914	31.0 787	12.0 305	Swivel
9010000795	4.0 102	36.0 914	30.6 777	12.0 305	Swivel
9010000893	4.0 102	36.0 914	32.5 827	16.0 406	Swivel
9010000822	4.0 102	36.0 914	36.0 915	12.0 305	Swivel
9010000885	4.0 102	36.0 914	36.5 928	16.0 406	Swivel

Load Rating: 37,000 lbs | 164.6 kN at 3,000 psi - Stiff Legs

9010000827	4.0 102	16.5 419	27.0/6.1 686/155	10.5 267	Fixed (dual mounting plates)
9010000826	4.0 102	16.5 419	27.0/6.1 686/155	10.5 267	Fixed (dual mounting plates)
9010000894	4.0 102	20.5 521	31.0 788	16.0 406	Swivel
9010000806	4.0 102	20.5 521	30.5 776	12.0 305	Swivel (right)
9010000805	4.0 102	20.5 521	30.5/7.7 775/196	12.0 305	Swivel (left - dual mounting plates)
9010000804	4.0 102	20.5 521	30.5/7.7 775/196	12.0 305	Swivel (right - dual mounting plates)
9010000854	4.0 102	24.5 622	34.5 876	12.0 305	Swivel (right)
9010000819	4.0 102	24.5 622	34.5 876	12.0 305	Swivel (center)
9010000825	4.0 102	36.0 914	30.5/7.7 775/196	12.0 305	Swivel (center - dual mounting plates)



Power-Packer standard hydraulic stabilization leg 3.0" to 4.0" bore

Standard Hydraulic Stabilization Legs (Measurements shown in inches | mm)

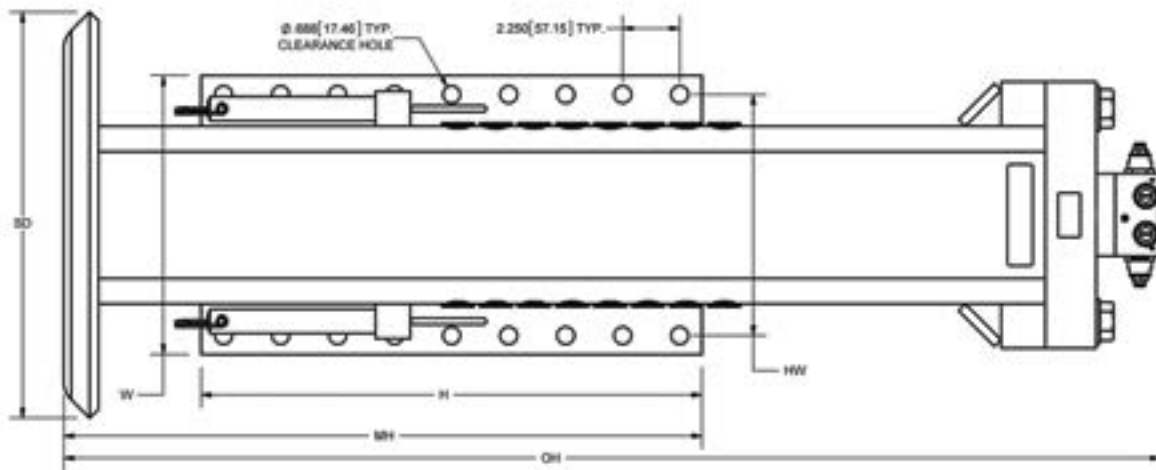
Part #	Bore	Stroke	Mounting Height (MH)*	Shoe	Dual CB Valve P/N	Shoe Type
--------	------	--------	-----------------------	------	-------------------	-----------

Load Rating: **49,000 lbs | 218.0 kN**

300463	5.0 127	18.0 457	20.5 521	16.0 406	9010001080	Swivel
9010000603	5.0 127	18.0 457	20.5 521	16.0 406		Swivel
300464	5.0 127	24.0 610	20.5 521	16.0 406		Swivel
300465	5.0 127	36.0 914	20.5 521	16.0 406	9010001079	Swivel
9010000605	5.0 127	48.0 1219	20.5 521	16.0 406		Swivel

Load Rating: **49,000 lbs | 218.0 kN - Stiff Legs**

300487	5.0 127	18.0 457	25.2 640	16.0 406	9010001083	Swivel
300488	5.0 127	24.0 610	25.2 640	16.0 406	90100001078	Swivel
300490	5.0 127	36.0 914	25.2 640	16.0 406		Swivel
300491	5.0 127	48.0 1219	25.2 640	16.0 406		Swivel
300563	5.0 127	48.0 1219	25.2/64.4 640/1636	16.0 406		Swivel (dual mounting plates)



Power-Packer standard hydraulic stabilization leg 5.0" bore



Standard Hydraulic Stabilization Legs (Measurements shown in inches | mm)

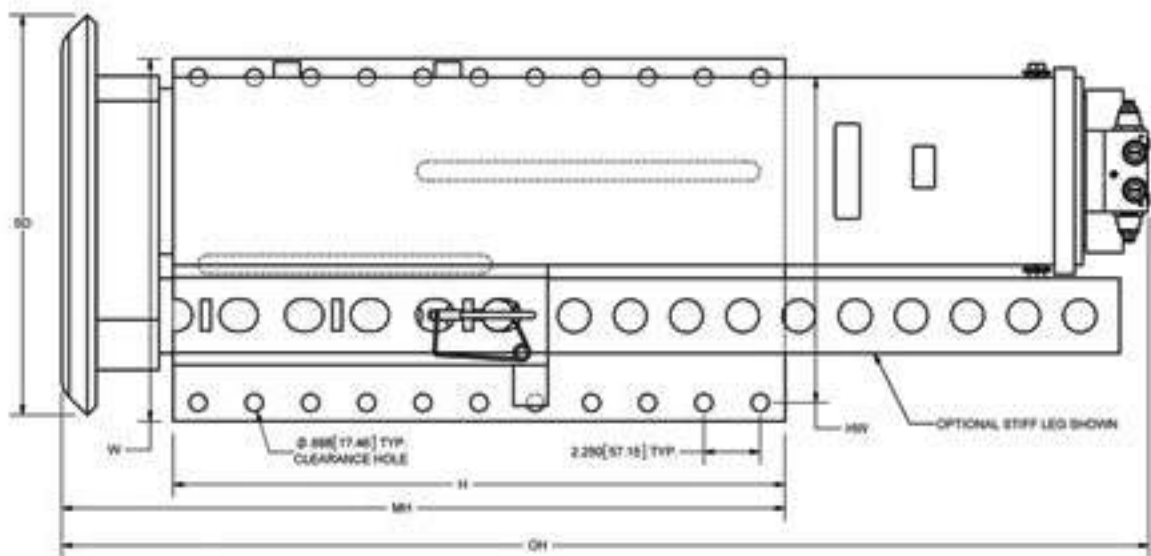
Part #	Bore	Stroke	Mounting Height (MH)*	Shoe	Dual CB Valve P/N	Shoe Type
--------	------	--------	-----------------------	------	-------------------	-----------

Load Rating: **70,000 lbs | 311.4 kN**

300050	6.0 152	18.0 457	28.5 724	16.0 406	9010001081	Swivel
300084	6.0 152	24.0 610	28.5 724	16.0 406	9010001076	Swivel
300137	6.0 152	36.0 914	28.5 724	16.0 406	9010001182	Swivel
300154	6.0 152	48.0 1219	28.5/62.5 724/1588	16.0 406		Swivel (dual mounting plates)

Load Rating: **70,000 lbs | 311.4 kN - Stiff Legs**

300184	6.0 152	18.0 457	29.0 736	16.0 406		Swivel
300431	6.0 152	24.0 610	29.0 736	16.0 406	9010001074	Swivel
300439	6.0 152	36.0 914	29.0 736	16.0 406	9010001075	Swivel



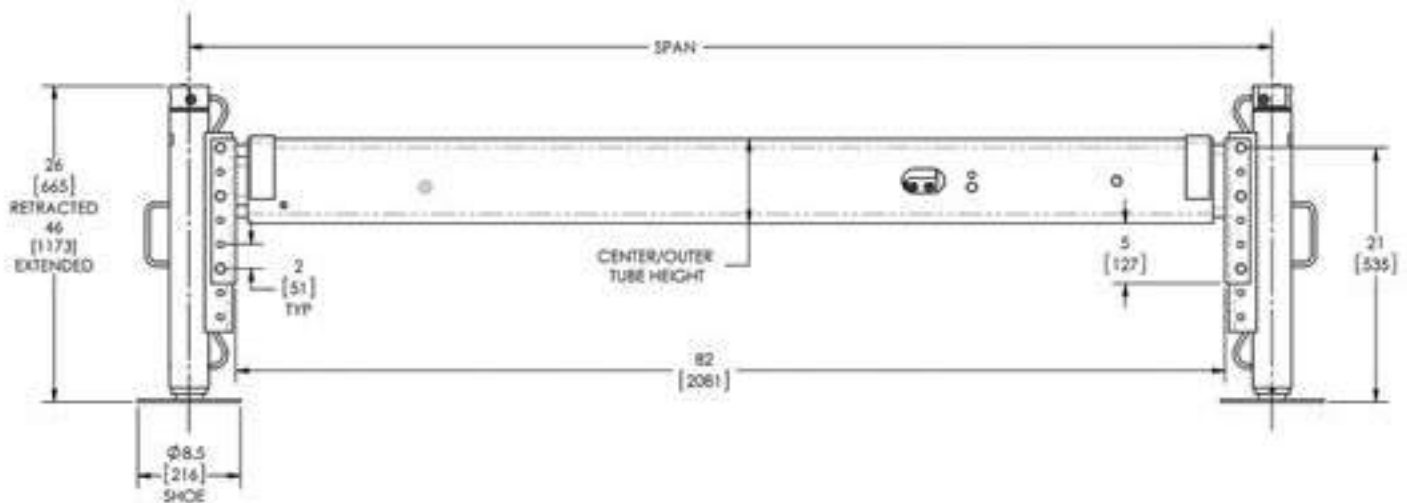
Power-Packer standard hydraulic stabilization leg 6.0" bore

Hydraulic Outrigger Systems for Work Trucks — Round Legs

(Measurements shown in inches | mm)

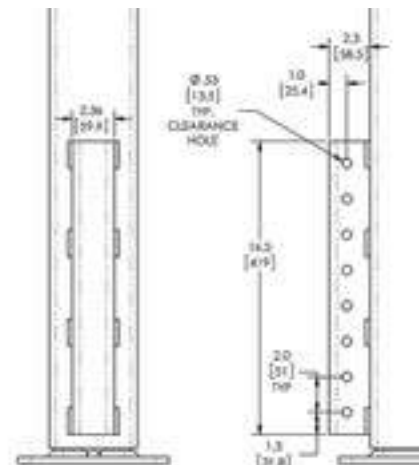
Part #	System Description	Control Type*	Bore	Stroke	Span Retracted	Span Extended	Extend Stroke	Center/Outer Tube Height
Boom Stabilization <6,000 lbs. 26.7 kN — 38,000 ft-lbs. 51.5kN-m								
9010000980	Manual Out-Power Down		2.25 57	20.0 508	89.0 2261	125.0 3175	36.0 914	5.0 127
9010000981	Power Out-Power Down							
9010000982	Manual out-Power Down w/ Pump and Control	RF						
9010000983	Power Out-Power Down w/ Pump and Control	RF						
9010001058	Manual out-Power Down w/ Pump and Control	FF						
9010001059	Power Out-Power Down w/ Pump and Control	FF						
Boom Stabilization <14,000 lbs. 62.3 kN — 82,600 ft-lbs. 112 kN-m								
9010001097	Power Out-Power Down		3.0 76	20.0 508	90.0 2286	132.0 3353	42.0 1067	7.0 178
9010001098	Power Out-Power Down w/ Manual Valve Bank							

* FF = Front Facing | RF = Rear Facing



HYDRAULIC OUTRIGGER COMPONENTS

Part #	Description
9010000783	2-1/4" Bore Round Leg 20" Stroke
9010000917	3" Bore Round Leg 20" Stroke
9010001054	Square Leg 18-3/4" Stroke
3510000289	Pump and Manifold Assembly
1510000280	Control Panel - Front Facing
1510000265	Control Panel - Rear Facing
1510000281-072	Wiring Harness - Front Facing Control
1510000266-072	Wiring Harness - Rear Facing Control
9010001056	Manual Valve Bank
2010000577	Valve Bank Handles



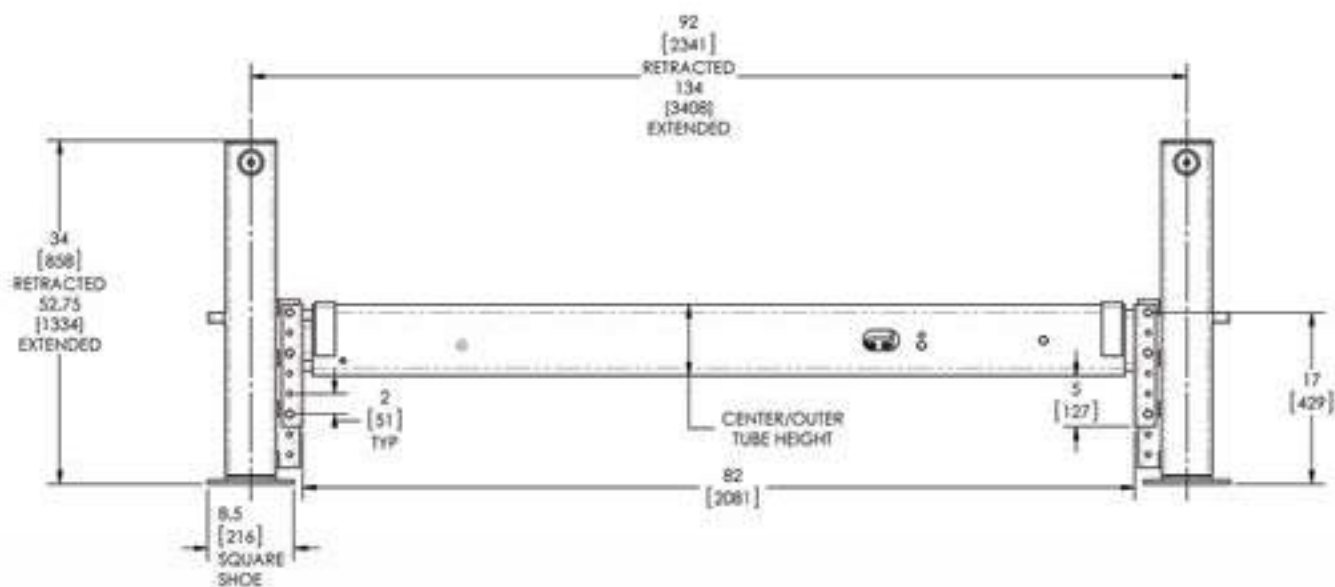
Mounting bracket for all legs

Hydraulic Outrigger Systems for Work Trucks — Square Legs

(Measurements shown in inches | mm)

Part #	System Description	Control Type*	Leg Stroke	Extend Stroke	Center/Outer Tube Height
Boom Stabilization <6,000 lbs. 26.7 kN — 38,000 ft-lbs. 51.5kN-m					
9010001068	Power Out-Power Down		18.75 476	36.0 914	5.0 127
9010001069	Power Out-Power Down w/ Pump and Control	RF			
Boom Stabilization <14,000 lbs. 62.3 kN — 82,600 ft-lbs. 112 kN-m					
9010001070	Power Out-Power Down		18.75 476	42.0 1067	7.0 178
9010001071	Power Out-Power Down w/ Manual Valve Bank				



* FF = Front Facing | RF = Rear Facing



Hydraulic Stabilization System Accessories (Measurements shown in inches | mm)

Part #	Power	# of Valves	Reservoir Size Gallon Liter	Power Beyond	Pendant Control	Notes
--------	-------	-------------	----------------------------------	-----------------	--------------------	-------

SYSTEM CONTROL BOXES

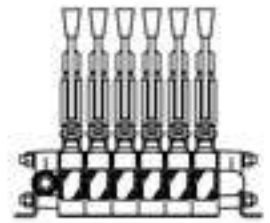
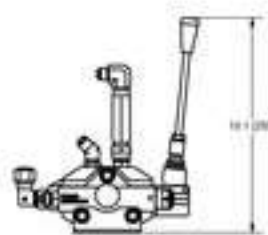
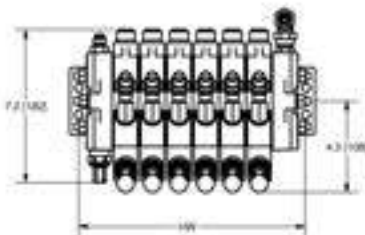
3510000218	12V DC	2 Solenoid	6.5 24.6	No	Yes		
300215		2	6.5 24.6	No	No		
901000687		2	6.5 24.6	Yes	No		
9010000769		3	13 49.2	Yes	No		
3510000227		4 Solenoid	6.5 24.6	No	Yes		
300217		4	6.5 24.6	No	No		
300229		4	6.5 24.6	Yes	No		
9010000786		4	13 49.2	Yes	No		
300219		6	6.5 24.6	No	No		
300231		6	6.5 24.6	Yes	No		
300546		None	11 41.6	No	No		Power Unit Only
3510000212	24V DC	2 Solenoid	6.5 24.6	No	Yes		
300251		2	6.5 24.6	No	No		
300263		2	6.5 24.6	Yes	No		
9010000770		3	13 49.2	Yes	No		
3510000226		4 Solenoid	6.5 24.6	No	Yes		
300253		4	6.5 24.6	No	No		
300265		4	6.5 24.6	Yes	No		
9010000789		4	13 49.2	Yes	No		
300255		6	6.5 24.6	No	No		
300267		6	6.5 24.6	Yes	No		
300540		None	11 41.6	No	No		Power Unit Only
300314	115/208-230V 1PH 60Hz	2	6.5 24.6	No	No		
300326		2	6.5 24.6	Yes	No		
300316		4	6.5 24.6	No	No		
300328		4	6.5 24.6	Yes	No		
300318		6	6.5 24.6	No	No		
300330		6	6.5 24.6	Yes	No		
300568		None	11 41.6	No	No		Power Unit Only
300350	230/460V 3PH 60 Hz	2	6.5 24.6	No	No		
300362		2	6.5 24.6	Yes	No		
90010000771		3	13 49.2	Yes	No		
300352		4	6.5 24.6	No	No		
300364		4	6.5 24.6	Yes	No		
9010000790		4	13 49.2	Yes	No		
300354		6	6.5 24.6	No	No		
300366		6	6.5 24.6	Yes	No		
300569		None	11 41.6	No	No		Power Unit Only
Power Retract Extend PSI Auto Boost							
100104	Air Operated	6 qt (5.7 liter)	11qt (10.4 liter)	2500	No		
100106	Air Operated	6 qt (5.7 liter)	11qt (10.4 liter)	3000	No		
101676	Air Operated	6 qt (5.7 liter)	11qt (10.4 liter)	3000	Yes		
Power GPM Reservoir Size RPM							
300600	Gasoline	3.5	11 41.6	3600			

Hydraulic Stabilization System Accessories (Measurements shown in inches | mm)

Part #	Number of Valves	Notes
--------	------------------	-------

HYDRAULIC VALVE ASSEMBLIES

3025-2	2	Motor Spool
3026-2	2	Last Section Closed
3027-2	2	Includes Power Beyond
3025-3	3	Motor Spool
3026-3	3	Last Section Closed
3027-3	3	Includes Power Beyond
3025-4	4	Motor Spool
3026-4	4	Last Section Closed
3027-4	4	Includes Power Beyond
3025-5	5	Motor Spool
3026-5	5	Last Section Closed
3027-5	5	Includes Power Beyond
3025-6	6	Motor Spool
3026-6	6	Last Section Closed
3027-6	6	Includes Power Beyond
3025-8	8	Motor Spool
3026-8	8	Last Section Closed



Part #	Description	Plate Thickness	Bolt Pattern	# of Mounting Holes
--------	-------------	-----------------	--------------	---------------------

MATCHING MOUNTING PLATES (optional) - For use when fabricating custom mounting points

100502	For a 3.5 89 or 4.0 102 Bore Leg	0.375 10	2.25 x 7.5 57 x 190	8
100509	For a 3.5 89 or 4.0 102 Bore Leg	0.375 10	2.25 x 7.5 57 x 190	10
100226	For a 4.0 102 or 5.0 127 Bore Leg	0.375 10	2.25 x 7.5 57 x 190	14
300035	For a 5.0 127 or 6.0 152 Bore Leg	0.5 13	2.25 x 7.5 57 x 190	22
300500	For a 5.0 127 Bore Stiff Leg	0.5 13	2.25 x 9.5 57 x 241	18
300165	For a 6.0 152 Bore Stiff Leg	0.5 13	2.25 x 13.0 57 x 330	22

MOUNTING ACCESSORIES

100357	Straight Ear
100353	Angle Ear
100354	Curved Ear
100346	Split Collar Assembly for 3.5 89 Leg
100348	Split Collar Assembly for 4.0 102 Leg

Please contact Power-Packer about optional stabilization accessories.

Stabilization Legs for Air Powered Landing Gear (Measurements shown in inches | mm)

Part #	Bore	Stroke	Mounting Height (MH)*	Shoe	Shoe Type
--------	------	--------	-----------------------	------	-----------

Load Rating: **25,000 lbs | 111.2 kN - High Ratio Single P.O. Check for Air Operation (Max. Retract psi Limit: 500 psi)***

100539	3.5 89	15.0 381	25.4 645	10.0 254	Fixed
100459	3.5 89	16.5 419	26.9 683	10.0 254	Fixed
100711	3.5 89	19.5 495	26.4 671	10.0 254	Fixed
100443	3.5 89	19.5 495	29.9 759	10.0 254	Fixed
100439	3.5 89	20.5 521	30.3 769	12.0 305	Swivel
100449	3.5 89	20.5 521	35.2 894	12.0 305	Swivel
100344	3.5 89	24.5 622	34.2 869	12.0 305	Swivel

Load Rating: **37,000 lbs | 164.6 kN - High Ratio Single P.O. Check for Air Operation (Max. Retract psi Limit: 500 psi)***

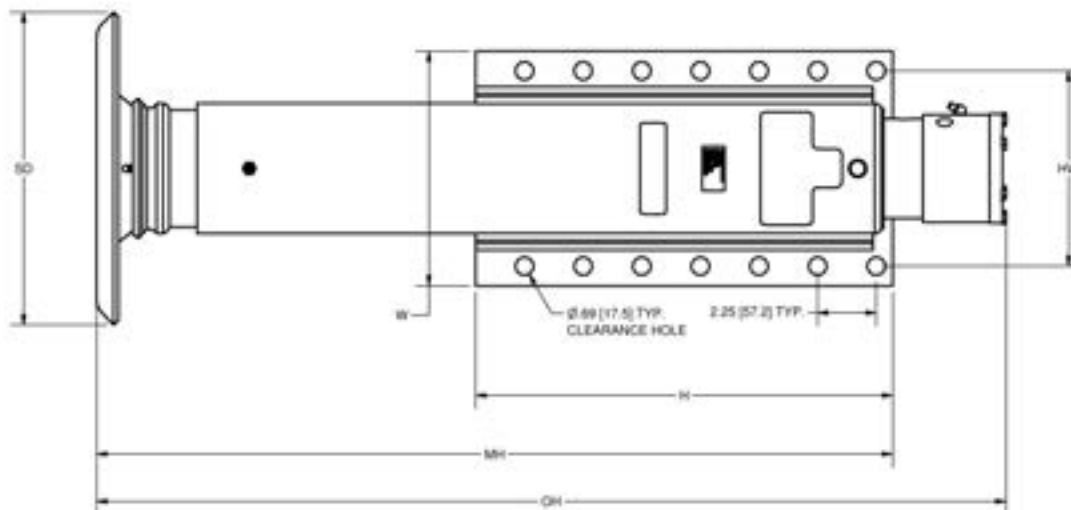
100506	4.0 102	20.5 521	35.5 901	12.0 305	Swivel
100510	4.0 102	20.5 521	30.6 776	12.0 305	Swivel
100859	4.0 102	16.5 419	26.9 683	10.0 254	Fixed
100861	4.0 102	19.5 495	29.9 759	10.0 254	Fixed
100911	4.0 102	24.5 622	35.0 888	16.0 406	Swivel
100946	4.0 102	4.5 114	34.5 876	12.0 305	Swivel
101397	4.0 102	24.5 622	25.2 639	12.0 305	Swivel
101770	4.0 102	30.0 762	30.0 763	12.0 305	Swivel

* To be used with Power-Packer air-operated controls



CONTROL BOXES

Part #	Power	Retract	Extend	PSI	Auto Boost	System Lift Capacity
100104	Air Operated	6 qt (5.7 liter)	11qt (10.4 liter)	2500	No	50K with 3.5" bore legs
100106	Air Operated	6 qt (5.7 liter)	11qt (10.4 liter)	3000	No	70k with 4.0" bore legs
101676	Air Operated	6 qt (5.7 liter)	11qt (10.4 liter)	3000	Yes	70k with 4.0" bore legs

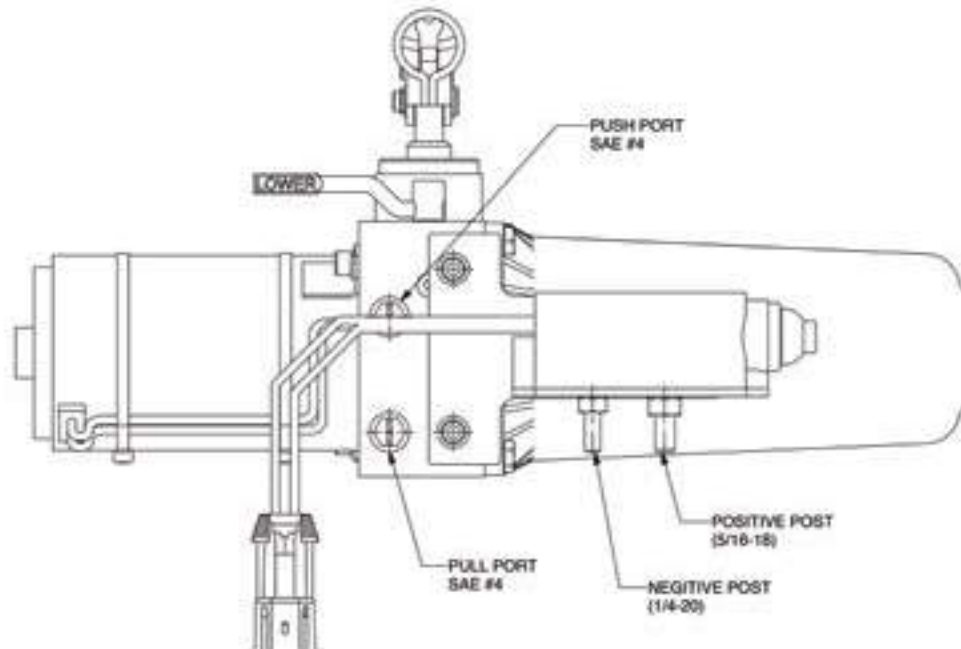


Cab Tilt System Components

PUMPS

Part #	Pressure Relief Setting psi bar		Description	Reservoir* Size Cubic Inches Liters
HP50024201	4500-4800	310.3-330.9	Hand pump	35 0.6
HP50024207	5200-5500	358.5-379.2	Hand pump	35 0.6
HP50034200	4000-4300	275.8-296.5	Hand pump	35 0.6
HP50034204	4000-4300	275.8-296.5	Hand pump	35 0.6
HP50034207	3600-3900	248.2-268.9	Hand pump	35 0.6
HP50034216	3600-3900	248.2-268.9	Hand pump	35 0.6
HP50044204	3200-3500	220.6-241.3	Hand pump	35 0.6
HP50044215	3200-3500	220.6-241.3	Hand pump w/ side ports	35 0.6
AU1540412	4500-4800	310.3-330.9	Hand pump w/ air assist	35 0.6
AU1340413	4000-4300	275.8-296.5	Hand pump w/ air assist	35 0.6
AU1340414	4000-4300	275.8-296.5	Hand pump w/ air assist	65 1.1
AU1340415	1700-2000	117.2-137.9	Hand pump w/ air assist	35 0.6
AU1340417	3200-3500	220.6-241.3	Hand pump w/ air assist	35 0.6
AU1340418	3200-3500	220.6-241.3	Hand pump w/ air assist	35 0.6
AU1340421	3200-3500	220.6-241.3	Hand pump w/ air assist	65 1.1
AU1540413	4500-4800	310.3-330.9	Hand pump w/ air assist	35 0.6
AU1540422	3200-3500	220.6-241.3	Hand pump w/ air assist	65 1.1
AU1540425	3800-4200	262.0-289.6	Hand pump w/ air assist/side ports	35 0.6
				Motor Voltage (V)
EP25044300	2100-2400	144.8-165.5	DC pump w/ hand pump	24
EP35013300	3100-3400	213.7-234.4	DC pump w/ hand pump	12
EP35013301	2700-3000	186.2-206.8	DC pump w/ hand pump	12
EP35013304	3100-3400	213.7-234.4	DC pump w/ hand pump	24

* Reservoirs not included with pump.



Cab Tilt System Components

HYDRAULIC LATCHES (Measurements shown in inches | mm)

Part #	Description	Height	Length	Top Length	Mounting Holes	Base Dimensions
LH30037220	Latch w/ pin indicator	12.4 316	5.5 140	4.0 102	4	5.5 x 4.0 140 x 102
LH30037232	Latch w/ pin indicator	12.5 318	6.25 159	3.5 89	2	6.25 x 3.5 159 x 89
LH30037233	Latch w/ pin indicator	12.5 318	6.25 159	3.5 89	2	6.25 x 3.5 159 x 89
LH50000101	Latch w/ pin indicator	3.75 95	6.6 167	4.5 114	4	4.5 x 4.0 114 x 102
LH50000104	Latch w/ pin indicator	3.2 82	6.6 167	4.5 114	4	4.5 x 4.0 114 x 102
LH50000107	Latch w/ NO (Normally Open) switch	3.2 82	6.5 165	4.4 113	4	4.5 x 4.0 115 x 102
LH50000109	Latch w/ NO (Normally Open) switch, Packard connector	3.2 82	6.5 165	4.4 113	4	4.5 x 4.0 115 x 102
LH50000116	Latch w/ NO (Normally Open) switch, Packard connector	3.2 82	6.5 165	4.4 113	4	4.5 x 4.0 115 x 102
LH50000123	Latch w/ NC (Normally Closed) switch w/proximity sensor	3.2 82	6.5 165	4.4 113	4	4.5 x 4.0 115 x 102

SPECS FOR ALL LATCHES:

Operating pressure maximum: 5000 psi

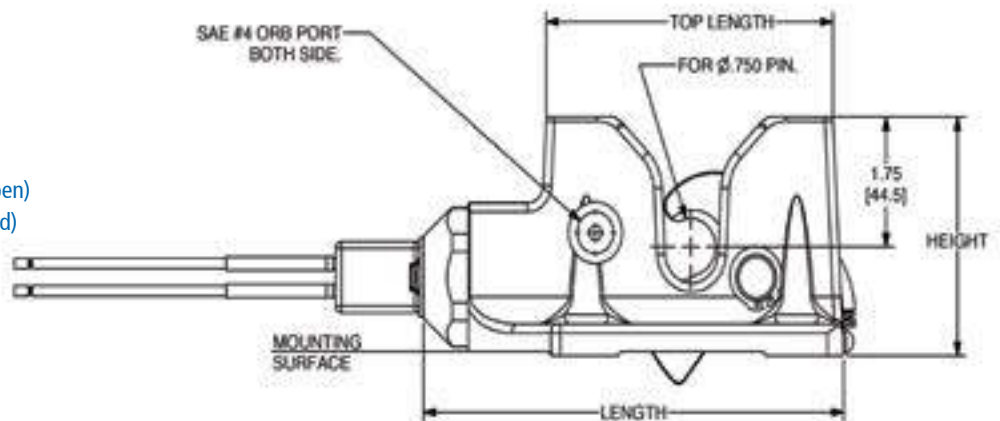
Piston diameter: 1.375"

Operating pressure to open latch: 200-350 psi

Maximum vertical pull load: 10,000 lbs.

NO switch indicates when latch is unlatched (open)

NC switch indicates when latch is latched (closed)



HOOD ASSIST CYLINDERS (Measurements shown in inches | mm unless noted)

Part #	Spring Rate	Stroke	Retracted Length	Extended Length	Spring Force Retracted	Spring Force Extended	Lock Feature
SA16095001	5.1 lbs 884 n	8.6 219	33.6 852	42.2 1072	59.6 lbs 265 n	102.3 lbs 455 n	Yes
SA16095000	5.1 lbs 884 n	8.6 219	33.6 852	42.2 1072	59.6 lbs 265 n	102.3 lbs 455 n	Yes



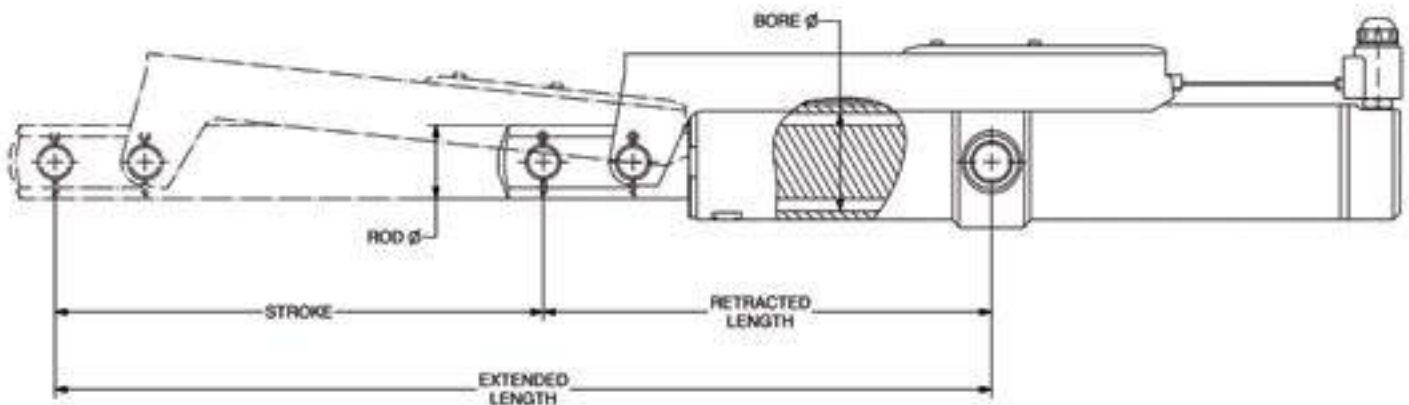
Cab Tilt System Components

HYDRAULIC CYLINDERS (Measurements shown in inches | mm)

Part #	Bore	Stroke	Retracted Length*	Extended Length*	Ports	Single or Double Acting	Velocity Fuse	Max Working Pressure psi bar
CA10107301	1.5 38	9.75 248	15.9 404	25.7 651.76	1/8-27 NPTF	S	Y	5000 344.7
CS10137302	1.5 38	13.0 330	19.5 495	32.5 826	1/8-27 NPTF	S	N	5000 344.7
CA15087501	1.5 38	7.9 200	13.5 343	21.4 544	1/8-27 NPTF	D	Y	5000 344.7
CA15137308	1.5 38	13.4 340	23.4 594	36.75 933	1/8-27 NPTF	D	Y	5000 344.7
CA15167309	1.5 38	16.25 413	23.9 609	40.2 1021	1/8-27 NPTF	D	Y	5000 344.7
CA15167310	1.5 38	16.25 413	23.5 597	39.75 1010	1/8-27 NPTF	D	Y	5000 344.7
CA15187501	1.5 38	17.8 453	25.9 659	43.7 1112	1/8-27 NPTF	D	Y	5000 344.7
CA15187506	1.5 38	18.1 459	28.5 723	46.5 1182	#4 SAE ORB	D	Y	5000 344.7
CA15217500	1.5 38	20.9 530	44.2 1123	65.1 1653	1/8-27 NPTF	D	Y	5000 344.7
CA15227503	1.5 38	21.8 554	29.6 752	51.4 1307	1/8-27 NPTF	D	Y	5000 344.7
CD13167504	1.25 32	16.0 406	25.25 641	41.25 1048	1/8-27 NPTF	D	Y	5000 344.7
CD15157502	1.5 38	15.2 385	23.6 600	38.8 986	1/8-27 NPTF	D	N	5000 344.7
CD15167503	1.5 38	16.0 406	25.25 641	41.25 1048	1/8-27 NPTF	D	N	5000 344.7
CA20107307	2.0 51	10.5 267	17.9 454	28.3 718	1/8-27 NPTF	D	Y	3000 206.8
CA20187307	2.0 51	18.1 459	28.5 723	46.5 1182	#4 SAE ORB	D	Y	3500 241.3
9010000197	3.0 76	14.5 367	9.5 241	23.9 608	1/8-27 NPTF	D	Y	3000 206.8
9010000608	2.0 51	17.4 441	9.0 229	26.4 671	#4 SAE ORB	D	Y	3500 241.3
9010000609**	3.0 76	15.9 404	13.7 348	29.6 752	#4 SAE ORB	S	N	3500 241.3
9010000617**	3.0 76	15.9 404	13.7 348	29.6 752	#4 SAE ORB	S	N	3500 241.3
9010000625**	3.0 76	15.9 404	13.7 348	29.6 752	#4 SAE ORB	S	N	3500 241.3

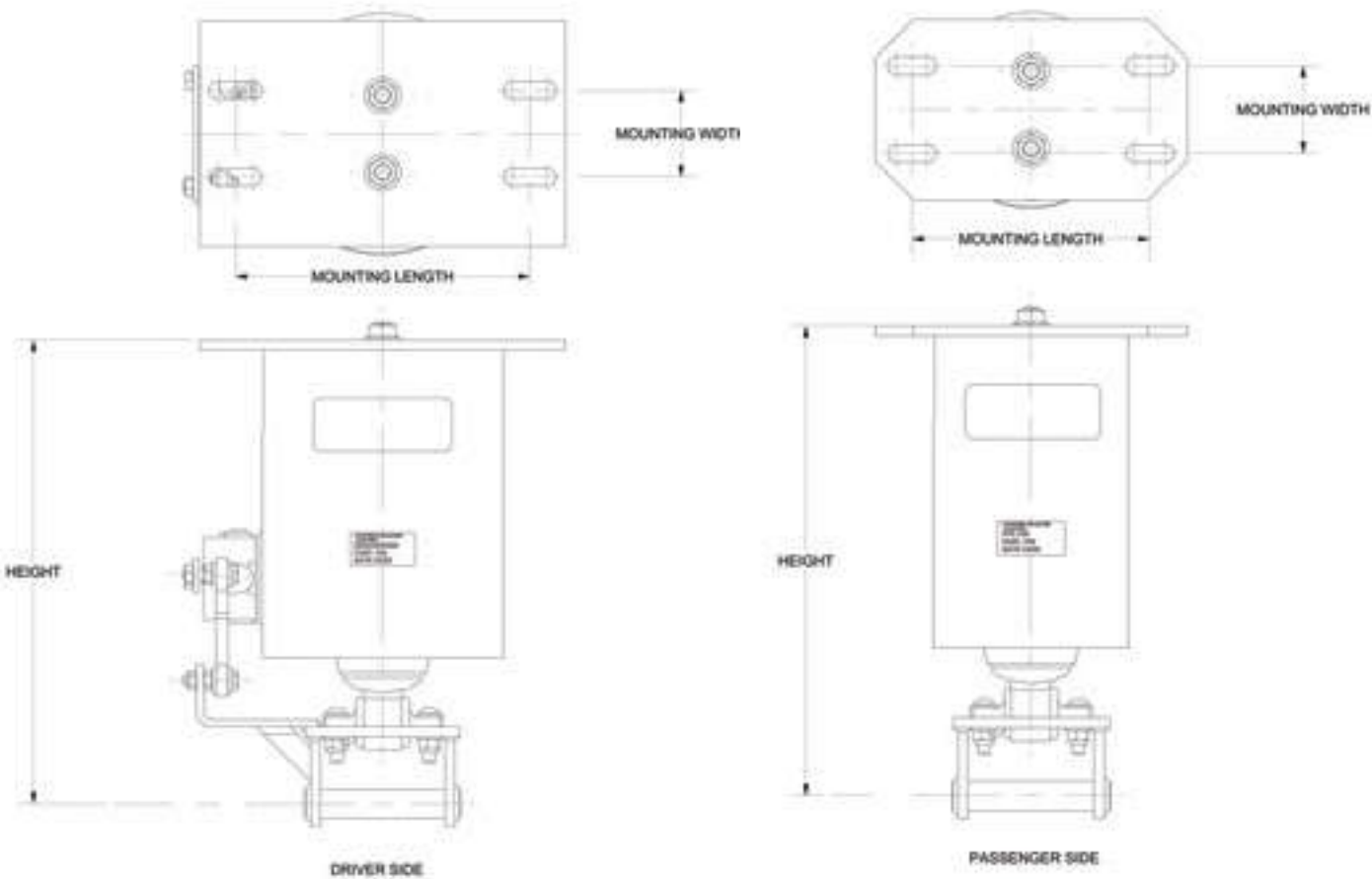
* Retracted length is the length from the cylinder connection to the plunger connection when cylinder is completely retracted.
Extended length is the length from the cylinder connection to the plunger connection when cylinder is completely extended.

** These are lost motion cylinders for less noise and a smoother cab ride.



Cab Suspensions

Part #	Height (in mm)	Mounting Width (in mm)	Mounting Length (in mm)	Max Operating Pressure (psi bar)	Load Capacity (lbs) at 100 psi (kN) at 6.9 bar	Vertical Suspension Travel (in mm)	Vertical Pull-Apart Strength (lbs kN)
CabCushion™ Suspension-Driver							
AS50101331	11.7 297	2.25 57	6.7-8.5 171-217	120 8.3	2000 8.9	1.7 42	16000 71
CabCushion™ Suspension-Passenger							
AS50101332	11.7 297	2.25 57	5.3-6.9 135-175	120 8.3	2000 8.9	1.7 42	16000 71





Power-Packer's primary U.S. manufacturing plant in Westfield, Wisconsin.

Our Global Locations

United States

Power-Packer Mfg.
516 Hillcrest Drive
Westfield, WI 53964
p: 800-745-4142, 574-256-1248
e: info@powerpackerus.com
www.powerpackerus.com

Gits Mfg

4601 121st Street
Urbandale IA 50322
p: 515-331-7240
www.gitsmfg.com

Sanlo, Inc.

400 Highway 212
Michigan City IN 46360
p: 219-879-0241
www.sanlo.com

Actuant Headquarters

N86 W12500 Westbrook Crossing
Menomonee Falls WI 53051
p: 262-293-1500
www.actuant.com

Europe

Power Packer Europa BV (HQ)
Edisonstraat 2
Oldenzaal Overijssel 7575 AT
Netherlands
p: 31 541 584 500
www.power-packer.com

Power-Packer Turkey

Akhisar Organize Sanayii Bolgesi 5.
Cadde No:33
Akhisar Manisa 45230
Turkey
p: +90 236 226 76 00

Yvel S.A.

49/53 rue Salvador Allende Bezons
Val-D'Oise 95870
France
p: 33-1-34-10-57-17
www.yvel.fr

Mexico and South America

Power-Packer Brazil

Rua Luiz Lawrie Reid
548 Parque Reid Diadema
São Paulo 04764-050
Brazil
p: 55 11 5687 2211

Power-Packer Mexico

1917 Neptuno Colonia Satellite
Juarez Chihuahua 32540
Mexico
p: 915-791-0005 (U.S.)
011-52-656 687-0905 (Mexico)

Asia

Actuant China Industries CO. LTD.

No.6, East Nanjing Road
Taicang Jiangsu
China
p: 86-512-52387558

Actuant India Private Limited

Municipal No 10
(Originally Old CITB No 218,
Later No10 and 10/1) Bellary Road
Bangalore Karnataka 560080
India
p: 91-80 39289000

POWER-PACKER®



Power-Packer offers hydraulic position and motion control solutions for the toughest, most critical demands in markets including on-highway vehicles; construction; mining; oil and gas; military; and fire and rescue.

Power-Packer is part of the Engineered Solutions segment of Actuant Corporation, a \$1.4B diversified, industrial organization with operations in more than 30 countries.



POWER-PACKER®

516 Hillcrest Drive, Westfield, WI 53964

Contact: *p*: 800.745.4142 | *f*: 574.256.1248 | *e*: info@powerpackerus.com

www.powerpackerus.com